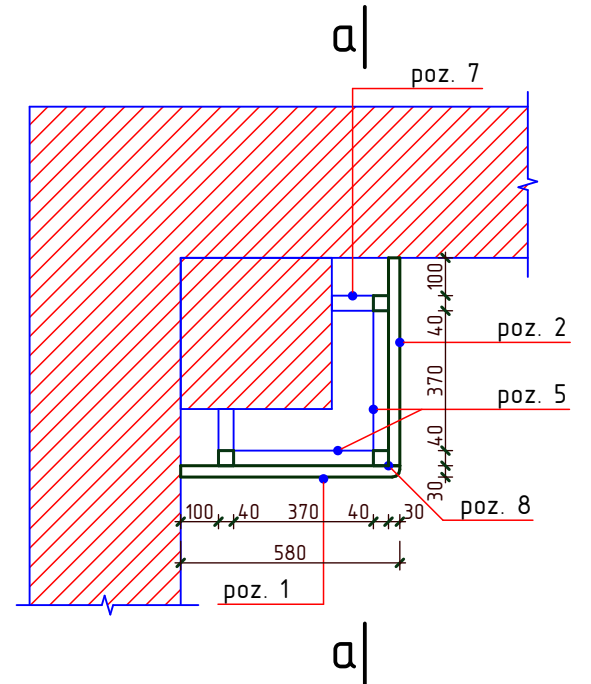
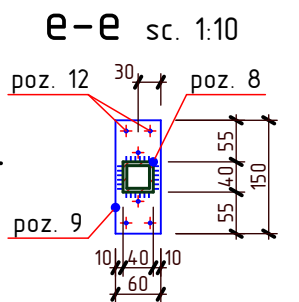
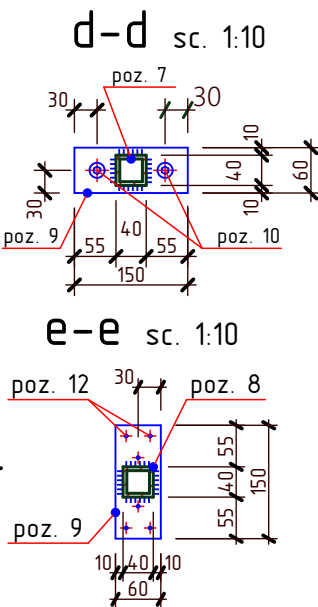
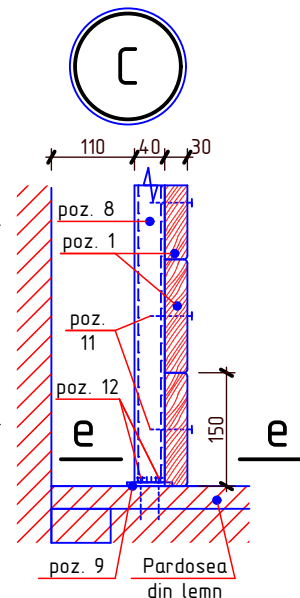
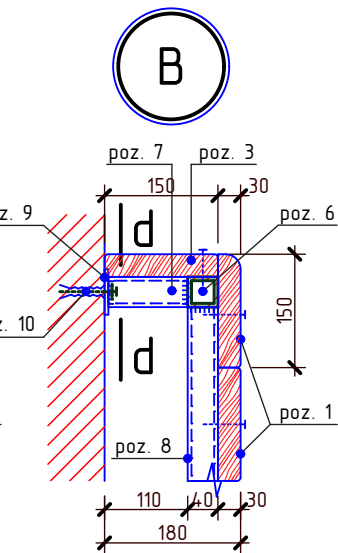
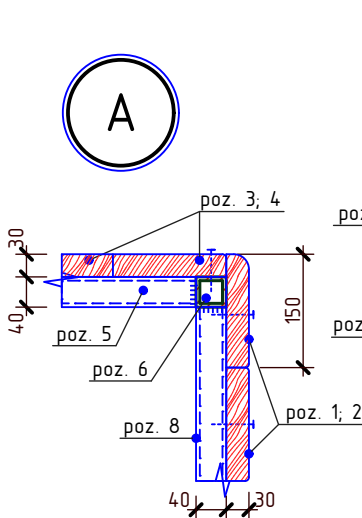
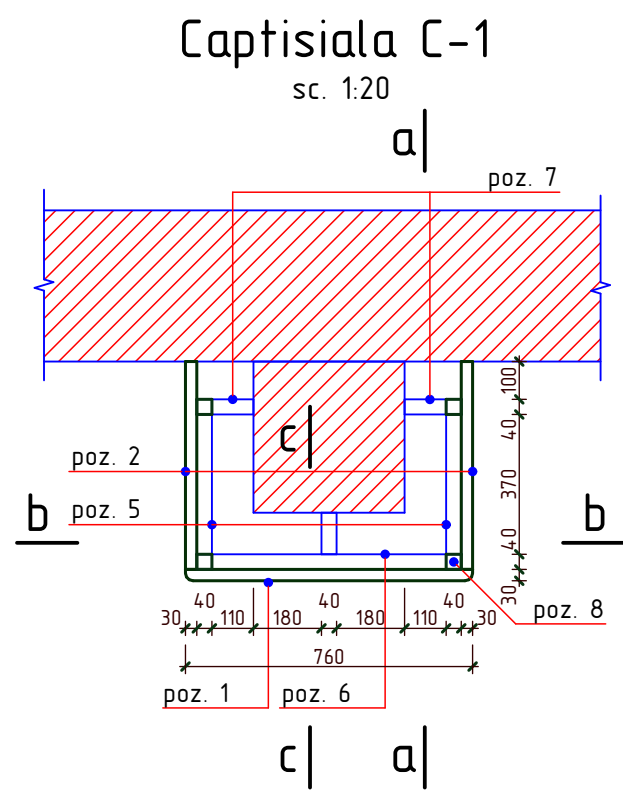
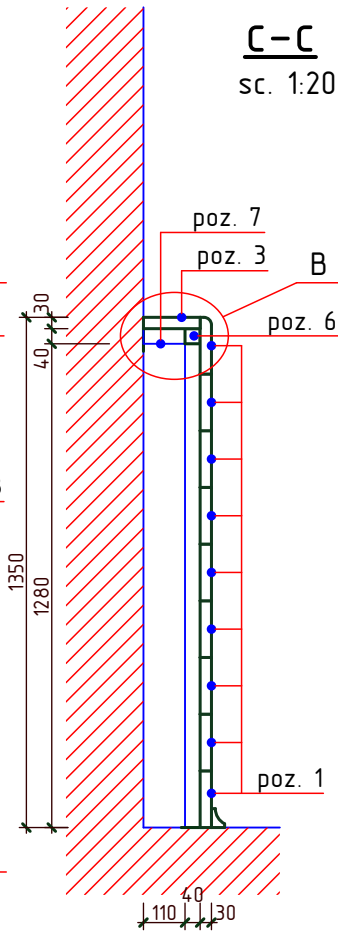
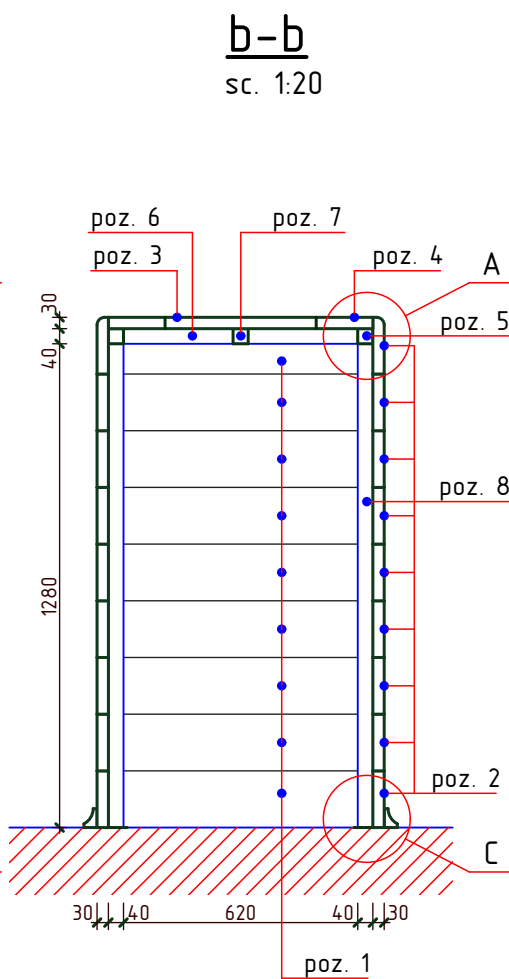
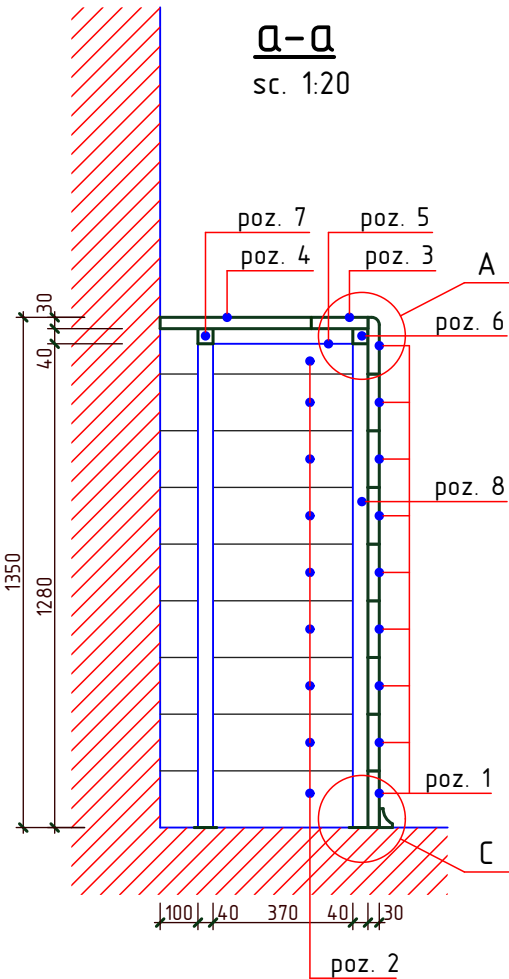


Specificatia materialelor

Pozitia	Denumirea	buc.	Massa un. kg	Nota
<b>Captusiala C-1</b>				
1	Scindura 150 x 30 l= 760	9	-	0,031 m³
2	Scindura 150 x 30 l= 550	18	-	0,045 m³
3	Scindura 150 x 30 l= 700	1	-	0,003 m³
4	Scindura 150 x 30 l= 550	2	-	0,005 m³
5	□ 40 x 4 GOST 8639-82 l= 370	2	1,59	3,18 kg
6	□ 40 x 4 GOST 8639-82 l= 620	1	2,67	2,67 kg
7	□ 40 x 4 GOST 8639-82 l= 110	3	0,47	1,41 kg
8	□ 40 x 4 GOST 8639-82 l= 1320	4	5,68	22,72 kg
9	— 60 x 5 GOST 103-76 l= 150	7	0,35	2,45 kg
10	Ancora M8 GOST 28778-90 l= 85	6	0,061	0,37 kg
11	Bulon M10 GOST 7798-70 l= 80	61	0,059	3,60 kg
	Piulita M10 GOST 5915-70	61	0,011	0,67 kg
	Saiba M10 GOST 11371-78	122	0,004	0,49 kg
12	Surub autofiletant pentru lemn	24	-	-
<b>Captusiala C-2</b>				
1	Scindura 150 x 30 l= 580	9	-	0,023 m³
2	Scindura 150 x 30 l= 550	9	-	0,022 m³
3	Scindura 150 x 30 l= 550	2	-	0,005 m³
5	□ 40 x 4 GOST 8639-82 l= 370	2	1,59	3,18 kg
7	□ 40 x 4 GOST 8639-82 l= 110	2	0,47	0,94 kg
8	□ 40 x 4 GOST 8639-82 l= 1320	3	5,68	17,04 kg
9	— 60 x 5 GOST 103-76 l= 150	5	0,35	1,75 kg
10	Ancora M8 GOST 28778-90 l= 85	4	0,061	0,24 kg
11	Bulon M10 GOST 7798-70 l= 80	40	0,059	2,36 kg
	Piulita M10 GOST 5915-70	40	0,011	0,44 kg
	Saiba M10 GOST 11371-78	80	0,004	0,32 kg
12	Surub autofiletant pentru lemn	12	-	-



OBIECTIV NR. - 14.05-D/19-SAC					
Reparatia capitala a unor incaperi in Liceul Teoretiv "Mihai Eminescu" din str. Stefan cel Mare si Sfint nr.81, mun. Balti					
Mod.	Can.	Foai	Nr.d.	Semnat.	Data
ASP	Postolachi				06.19
ISP	Hihlat E.				06.19
Elaborat	Ciobanu V.				06.19
Reparatie capitala				faza	plansa
				PE	11
Captuseala C-1, C-2; Nod A, B, C; Sectiunea a-a, b-b, c-c, d-d, e-e; Specificatia materialelor				SRL "GEO-CAD-PROIECT" mun. Balti	

1. Toate imbinarile prin sudura se va efectua cu electrozi tip З-42 ГОСТ 9467-75, imbinarea de sudura cu inaltimea h=6mm, lungimea - pe toata lungimea imbinarii.
2. Dupa executarea lucrarilor de sudura imbinarile trebuie curatate si executata protectia anticoroziva.
3. Protectia anticoroziva a constructiilor din metal se va efectua in corespundere cu СНП 2.03.11-85 "Защита строительных конструкций от коррозии".
4. Toate constructiile din otel vor fi vopsite cu lac de grupa "I" in corespundere cu СНП 2.03.11-85.
5. Constructiile din metal trebuie sa fie grunduite cu 1 strat de grund ГФ-021 (ГОСТ 25125-82), urmata de vopsirea cu vopsea emilata ПФ-133 (ГОСТ 926-82) cu grosimea 100 мкм.
6. Toate elementele din lemn (in volum de 1,04m³) se vor trata cu substante antiseptice si antipirene, conform indicatiilor СНП 2.03.11-85 "Защита строительных конструкций от коррозии" si se vor grundui si finisa cu vopsea pentru lemn.

Nr.inve.a orig. Data si semnatura Nr.inve.schim.